



Kinnikinnick Journal

Volume XVI Number 5

Nov /Dec 2013

Kinnikinnick Native Plant Society, Inc. / PO Box 1092 Sandpoint, Idaho 83864

www.nativeplantsociety.org

Upcoming Programs

Presentations Sponsored by

**Kinnikinnick Native Plant Society
and Sandpoint Parks and Recreation
Community Hall, First Ave, Sandpoint
(Across from County Courthouse)**

All meetings begin at **9:45** and are held at the Community Hall unless otherwise indicated.

Saturday, Nov 23

Phil Hough, Executive Director,

Friends of Scotchman Peaks Wilderness

Lightning Creek Treasured Landscape's

Whitebark Pine/

Alpine Botanical and Weeds Projects

Saturday, Jan 25

Chris Schnepf, Professor and Area Extension
Educator in Forestry, University of Idaho

*Ecology and Silviculture
of the Lodgepole Pine*

For Your Calendars

HOLIDAY FUNDRAISER

Tuesday, November 19

**Pend d'Oreille Winery
5:00 - 8:00**

*Mark your calendars and invite your friends and neighbors to join members of KNPS for the fun of a **Sip N Shop at the Pend d'Oreille Winery!!**

*Bring your checkbook and plan to bid on the unique and creative gift baskets donated by members during the silent auction.

Enjoy a fun evening visiting with friends, enjoying a glass of wine or other beverage, and purchasing holiday gifts.

*Pend d'Oreille Winery will donate all proceeds from the purchase of their popular Bistro Rouge to KNPS.

Cheryl McKee

Holiday Potluck

Saturday, December 7

Our Holiday Potluck will be held this year at Sylvia Chatburn's home from 11 AM to 1 PM. The address is 1787 East Dufort Road, Sagle, ID.

New Board Members to be Elected at the Nov Meeting

As stated in the KNPS By-laws, the annual meeting, held in November, includes a vote on new members of the Board ("Directors"). For the term beginning in January, 2014, the Nominating committee recommends: **John Albi, Lexie DeFremery, and David Stroud.** (The fourth "new" member is **Gail Bolin**, who will be returning).



Committee Reports

Arboretum News

On October 2 we put the arboretum to bed. We spread mulch on the 2 newly planted areas and watered the new plants in. They should provide nice color in the spring and summer. The water lines have been blown out and the benches put away for the winter. Twelve gardeners spent over 230 hours working in the arboretum this summer. Some areas are pretty much maintenance free. The drip irrigation system in the wall and the Interior Rain Forest has really helped. Heavy mulching with pine needles has kept the weeds down in the Young Forest.

The arboretum committee will take a rest until after the first of the year when they will be making plans for the upcoming season.

Sylvia Chatburn

Conservation Committee

The Conservation Committee is meeting the week of November 4 to discuss the Forest Plan. If you are interested in conservation issues please feel free to contact Molly O'Reilly at 610-664.

Landscaping Committee

On October 30, Ken Haag, Janice DeBaun, Nancy Fontaine and I found enough free mulch to bed down the Mickinnick Trailhead for the winter. The next day's gentle rain tamped it all in place. We need more volunteers in the spring to help us maintain this lovely and well-established landscape. One morning a month will make a big difference.

Eileen Atkisson

Past Programs

September 28, 2013: **Ed Robinson**, Area Manager of the Idaho Department of Lands, spoke about the history and purpose of state endowment trust land. This property was derived from a federal grant of 3.6 million acres of land

for the support of state institutions when Idaho became a state in 1890. Some land was initially sold and the IDL manages the remaining 2.4 million acres to generate income for the beneficiaries, mainly public education. The main source of revenue is the sale of timber followed by leases for grazing, commercial buildings, and earnings from invested funds. IDL follows the directives of the State Board of Land Commissioners made up of the Governor, Attorney General, Secretary of State, State Controller, and Superintendent of Public Instruction. In FY 2013, \$475 million was distributed to beneficiaries; Bonner County schools received \$594,000. Ed manages 95,000 acres, his area extends from Kootenai County to the Canadian border. IDL regulatory responsibilities include issuance of permits to log private lands; tree slash management; protection of the lands beneath navigable lakes and rivers; and fire protection for 820,000 acres of wild land. IDL also provides forestry and fire education programs. Ed ended his presentation with a series of historical photos of the region from 1933.

October 26, 2013: **Nan Vance**, former research



plant physiologist for USFS and graduate faculty member at Oregon State University, spoke about insects' relation to flowers and to each other in the context of pollination ecology. Nan provided a brief explanation of the process of pollination. Using close-up photos, she

demonstrated flowers being pollinated along with other lesser known flower-insect interactions. She explained what makes an insect visitor a potential pollinator and how research determines which insects are the most likely to be effective pollinators. Nan's photography included a wealth of plants and insects endemic to the Columbia River Basin. The photos provided a background for the presentation that was both beautiful and informative.

Photo by Marilyn George



Lois Wythe Grant

The November 30th deadline for applications for the Lois Wythe Grant is fast approaching. The exciting news about the grant is that funds have been increased to \$300 which will expand the possibilities for projects. As in the past, funds will be awarded based on originality and the potential effectiveness of the project which promotes the awareness of native plants.

As you are aware, the grant honors Lois Wythe as the founder of our organization and the developer of the Native Plant Arboretum in Lakeview Park. Prior winners include Natalie Larson, scholarship for the master gardener class; Lauren Gonsalves, tuition assistance for a seed-saving class; the Panhandle Animal Shelter, a landscaping project; and Kootenai Elementary School, a landscaping project around their flag pole. Application forms are available on our website. Any questions can be directed to Janice DeBaun at 263-8970.

Forest Service Nursery Tour in Coeur d'Alene



On June 27th thirteen of us toured the USDA, Forest Service Coeur d'Alene Nursery. Aram Eramian, Forester, led our tour which took over 1-1/2 hours. The mission of the nursery is to provide quality seedlings for national forests in northern

Idaho, Montana, and North Dakota. To accomplish this the nursery maintains 130 acres of irrigated seedbeds, along with 15 controlled environment green houses. We were in and out of those green houses and felt the blast of freezing air as Aram opened the freezers where many of the

seedlings spend the winter. All of us enjoyed the tour and highly recommend it. They do welcome drop ins, however larger groups are normally scheduled at the office, call (208-765-7372). Their address is 3600 Nursery Road and business hours are 7:30 a.m. to 4:00 p.m. Monday through Friday.



Jackie Earle

Photos by Marilyn George

At Right: Seed Extractor and Freezer





2014 Kinnikinnick Calendar



JAN



FEB



MAR



APRIL



MAY



JUNE



JULY



AUG



SEPT



OCT



NOV



DEC

The 2014 KNPS Calendars will be available at the November 23rd meeting. By request we are replacing the 4.5x5.5" calendar with an 8.5x14" size so that you have more space to write your notes. The standard 8.5x11" is still being offered. The calendars sell for \$8 for the first one and \$7 for each additional calendar ordered. Please place your order for standard size, extra large or a mixture, before the November 23rd meeting so that they will be ready for pick up at that meeting, the December

holiday gathering or at an arranged time and place. You can order by calling Marilyn George at 263-9470 (leave a message with Magic Jack if I'm not available), or send an email to iluv2photo@gmail.com. Payment is due when you pick up your order. If you wish to have them sent, add \$2 to the bill for each calendar to be sent. Send your order and check (made out to KNPS) to Marilyn George, 398 Meadowlark Lane, Sandpoint, ID, 83864. Thank you.

It's Time to Renew!

Memberships expire at the end of the year. Your continuing support helps make possible the development and maintenance of the Native Plant Arboretum, the Lois Wythe Scholarship, a booth at the county fair, and monthly programs at the Community Center. The KNPS continues to be a strong voice for plant conservation in the region. Please help us by supporting these many fine efforts.

Membership Categories

- *Patron* \$100
- *Sustaining* \$50
- *Sponsor (commercial)** \$50
- *Household* \$25
- *Individual* \$25
- *Student* \$15
- *Senior* \$15

**non-voting membership*

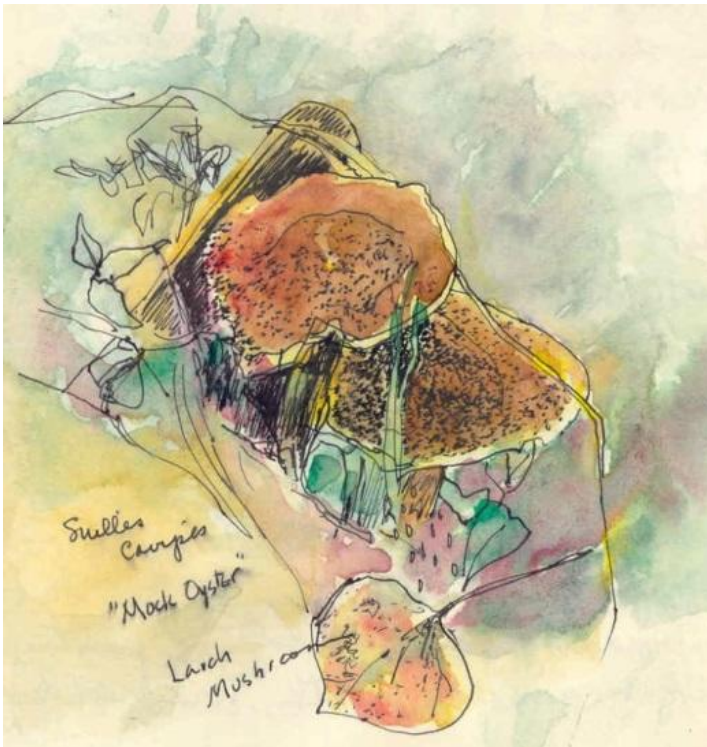
You can renew by mail by sending a check to PO Box 1092, Sandpoint, ID 83864; or at any of the general meetings.



From the Moist Montane

Story and Artwork by Marilyn McIntyre

Mushroom Frenzy...



Fall is a most beautiful season to me as a walker and artist and lover of plants. Up close, I feel as if I could spend days just looking at the patches of moss under the trees with club moss, Twinflower, Kinnikinnick, Prince's Pine and Wintergreen poking through. Mushrooms of all shapes, colors and sizes, along with red-berried ground covers attract my eye. Then, I look up. The peaks are dusted in snow while their forested flanks reflect the same patchy pattern of dark green, yellow, red orange and purple that I saw on the ground. On top of it all are the puffy gray and white clouds moving their shadows across the landscape, emphasizing first the snow and then the golden birch and dark forests. It is truly a time of transition.

I think the mushrooms might be a bit confused by the constant cycling of rain and sun, but they keep obliging by popping up seemingly instantly, when nobody is looking. The inedible form of Chanterelle that prevailed here this summer is still visible in ragged clumps of bright orange. The most beautiful,

though poisonous, are the Amanita muscaria or death caps, with their bright red, orange and yellow caps covered in white bumps. My fall favorites, in terms of edibility, are the Boletes, or gill-less ones. We have King Boletes and Birch Boletes in abundance and they happen to be 2 of the few that I know well, along with the Larch mushroom, Suillus cavipes and morels in the spring. I never experiment with eating others.

The Larch seem slow to change color, but the huckleberries and red osier dogwood have dark red stems while still holding onto their leaves. The glossy leaved ground covers, Kinnikinnick and Pyrola are loaded with red berries and they will stay that way all winter down in the subnival zone where the snow meets the ground. Did I say snow? Soon enough it will cover all of those colors in a mantle of white and I suspect it is just that fact that makes them all the more precious.

Business Sponsor

CEDAR MOUNTAIN PERENNIALS

Specializing in Native Perennials for Inland Northwest Gardens

Visit us at:

- The Kootenai County Farmers Market in Hayden
- The Sandpoint Farmers Market in Farmin Park
- The Nursery by Appointment

7875 E. Highway 54, Athol (208) 683-2387
www.cedarmountainperennials.com



Member Profile: *Becky Mills*

Article and Photo by Rae Charlton

We have Becky to thank for the excellent programs we enjoy each month. She'd be quick to point out that other people suggest speakers and topics, which helps. But the detail and deadline-heavy work of verifying speakers, getting publicity out, planning a schedule months in advance, and showing up early each meeting to set up the room (and equipment) requires dedication and organizational skills. Becky has served on the Board for the last year, and she and husband Jeff Kuhns show up to help, whatever the project, whatever the weather.

Becky and Jeff met in college (Indiana University of Pennsylvania) and were married a week after graduation. She secured a fellowship and earned a Master's in Spanish. French was her minor, and she spent a year in France teaching English to high school students. Then Jeff's career brought them out to Idaho, where she worked as a Claims Examiner for the ID Department of Employment. Her boss was Marcella Nelson! They enjoying exploring Idaho, but decided to return to college town life in Pennsylvania.

Her jobs there included being a District Administrator for a U.S. Congressman, and more recently, Director of Corporate/Foundation Relations for the Pennsylvania State University, which involved major gift fund-raising. She and Jeff took early retirement and moved here in 2010.

Looking around for interesting activities, they found KNPS, and appreciated the friendliness of the group (plus the interesting speakers at meetings). They joined, and soon after invited the Landscape committee out to help them plan how and where to use native plants. They relish the outdoor life, and can often be spotted walking, kayaking, or bicycling. And they travel, often to Spanish-speaking countries, such as Cuba, Costa Rica, Mexico, and Peru. While in college, Becky spent a summer with a family in Spain. The friendship formed then continues, and recently Becky and Jeff attended the youngest daughter's wedding. Every few years, when she gets homesick for Spain, Becky starts agitating for a trip. They pick a region new to them, and a home-base for exploring it, usually staying three or four weeks.

Their next travel assignment will be moving to Boise, to enjoy life in a downtown condo. Much as they would have loved staying here, they could not find any suitable condos downtown! And Boise offers many interesting opportunities, such as learning more about the Basque community there, perhaps becoming involved with the Idaho Humanities Council, and seeking out continuing education courses (e.g., through Boise State). It is safe to predict that they will become involved with their community once again, and Boise will be enriched by all they have to offer.

We are sorry to see you go, but wish you all the best. Instead of saying "goodbye" we'll just say "hasta la vista!"

